



PATAG Meeting Agenda

1.00pm – 3.00pm, Wednesday 25th January 2017

The School House, Historic Village, 17th Avenue, Tauranga

Population Ageing Technical Advisory Group [PATAG] – Terms of Reference (SG Strategy 13)

Function:

- PATAG is a collaboration between the Bay of Plenty District Health Board (BOP DHB) and SmartGrowth. It is anchored through a memorandum of understanding signed by the BOPDHB and the SmartGrowth partnership on 13 February 2008. It is a BOP DHB Technical Advisory Group.
- The role of the Population Ageing Technical Advisory Group (PATAG) is to provide expert technical advice to the Bay of Plenty District Health Board and SmartGrowth regarding: policy, planning, and service development to best meet the needs of the community having regard to the impacts and opportunities arising from the ageing population, now and in the future.
- These needs encompass the social, economic, cultural, and environmental determinants of health and wellbeing.

Membership:

Membership of PATAG will have knowledge/ expertise in the four well beings and clinical expertise from the health sector. Members will be appointed by the CEO of BOPDHB and the Independent Chair of SmartGrowth. PATAG will have an opportunity to make recommendations for membership. Members will be appointed for their individual expertise and experience. An ability to contribute to the achievement of the objectives of PATAG will form the basis of the skills, knowledge, or experience required. The mix of skills and experience within the PATAG will be taken into account.

Aims:

BOP DHB:

- The prioritization of investment in services to ensure the health and support needs of older people are met; and
- To manage the impact of our ageing population on health services and support the provision of high quality and sustainable services for all people.

SMARTGROWTH:

- Enhanced capacity of communities to facilitate both 'active ageing' and 'ageing in place'.
- Improved access to information and research as a basis for decision making to achieve successful population ageing.

BOTH PARTNERS:

- Provide advice that is professionally credible, evidence based, internationally current, and locally relevant.
- To encourage collaborative planning and implementation across all agencies.
- Encourage innovative leadership in consideration of population ageing matters and its impact on potential impacts and opportunities.

Relationships: PATAG will:

- Take direction from the BOP DHB and SmartGrowth.
- Be provided with management and secretarial support from the BOP DHB.
- Engage as appropriate with sub-regional planning processes.
- Maintain effective relationships with community providers and agencies including SmartGrowth's Strategic Partner Forum and the Combined Tangata Whenua Forum. • Engage with national and regional bodies as appropriate.
- Recognise the autonomy of the collaborating partners and the roles of participating individuals and organisations.
- Have a "no surprises" approach and work in a collaborative and respectful manner within its membership and partners.



- BOP DHB and SmartGrowth will from time to time work with PATAG to create community discussion and debate

Scope:

- PATAG will define and analyse issues to provide future strategic direction and advice to ensure the wellbeing of the communities having regard to the impacts and opportunities arising from an ageing population.
- The scope of work will take into account the BOPDHB Annual Plans and Regional Plans, the SmartGrowth Strategy and Implementation Plan; and subsequent iterations of these documents.

PATAG will provide:

- Expert advice and stakeholder group participation in issues of ageing relevant to the work of both the BOPDHB and SmartGrowth integrated planning for population ageing in the region, through collaboration, co-ordination, effective and efficient productivity.
- Information that will create and encourage community awareness and debate on ageing Population.

PATAG will consider and provide advice on:

- The health, wellbeing and disability needs of the ageing population in the Bay of Plenty region, funded by both Vote Health and Health and Disability Services.
- Social and economic issues related to wellbeing, workforce participation, skill development, retention and development.
- Improved coordination and responsiveness of services provided to an ageing population and their families.
- The impact of the four well-beings: social, cultural, economic and environmental, as they relate to an ageing population.
- The related strategies and implementation programmes that at any time may be relevant to the growth and development of the region.

Operational Structures:

- The formal structure and process will align with the established BOP DHB Technical Advisory Group and SmartGrowth structure and purpose.

It is expected that PATAG will:

- Meet at least quarterly.
- Undertake work within specific working groups to progress tasks.
- Meet goals according to BOP DHB and Smartgrowth reporting time frames.
- Nominate a representative from PATAG to SmartGrowth Strategic Partners Forum.

Chairperson:

- A Chairperson will be appointed jointly by the BOPDHB CEO and SmartGrowth Independent Chair for a specified and agreed term.

Communication:

- The Chair of PATAG or nominee will be responsible for all communication under the agreed communication policy.

Reporting Requirements: PATAG will provide a report every 6 months to:

- BOPDHB.
- SmartGrowth Implementation Committee.

Committee:

- Other specific reports as requested.

Performance:

The performance of PATAG will be reviewed by the members annually. Discussions will be held with the BOP DHB and SmartGrowth regarding:

- Recommendations.
- Priorities.
- Membership.
- Other matters arising.

1. Apologies
2. Previous meeting minutes and actions – **(Paper A)**
3. What's Hot
4. Update on Ageing Well research/summit – **Karen/Anne**
5. Update on HIA on the PT Blue print – **Tony Lawson**
6. Structure Diagram - Karen Summerhays - **(Paper B)**
7. Update from Combined Forum Chairs meeting - **Chair**
8. Position Paper Response update - Karen Summerhays - **(Paper C)**
9. General Business

Paper A

**Population Aging Technical Advisory Group Meeting
Wednesday 23rd November 2016 1:00 – 3:00pm
The School House, The Historic Village, 17th Avenue**

Present	Tony Lawson, Mary Dillon (chaired for Anne P), Karen Summerhays, Vicki Jones, Lorraine Wilson, Elizabeth Spellacy, Emily Rogers	
Apologies	Annie Hill, Sarah Davey, Anne Pankhurst	
Previous Minutes and Actions		Minutes of the previous 26 October meeting were accepted as a true and correct record. Previous actions confirmed: Tony Lawson confirmed will represent PATAG at the BT Blueprint Steering Group Membership confirmation – Completed by PATAG Forum
	Action	
What's Hot	Update	<ul style="list-style-type: none"> • Sustainable housing - Tony mentioned very interesting • Karen talked about shared spaces in the community, how important these are we are losing section size and require usable space. Houses could be closer to the road to enable more space out the rear of property. Karen gave overview of presentation she attended which she found inspiring. • Useful resource kit- Goodhomes Toolkit www.goodhomes.co.nz

		<ul style="list-style-type: none"> Position papers plan and design code discussed we don't want to lose what we want at ground level at initial concept. DR Liz advised Hospitals have discovered frailty and sarcopaenia (lose of muscle and strength) projects are taking place in regards to this. Frailty main conditions - Loss of muscle, Gate gets slower, walk slower, un intended weight loss more than 5% per annum lack of energy and endurance, loss of activity and loss of connectivity Age Concern are running Coffee, Cake & Conversations. It started with 5 people now grown to 40 people attending afternoon tea and leading conversations this has been very successful group.
	Action	Dr Liz will work on presentation in regards to Frailty & Sarcopaenia for the next Forum meeting Karen will circulate items of interest -accommodating ethic interest, two presentations from Kay retirement homes release of equity and one on the NZ property owners
Life when Renting: Home ownership by age cohort (Paper B) Update to the life when renting timeline (Paper C)	Discussion	<ul style="list-style-type: none"> Discussion around home ownership by age cohort concern around loss of wealth, no capital gain. If we are not owning the houses – who is? Renting stock being built up. What is concerning is our social ethnics, social dynamics, there is nothing that protects renters. We need to start raising awareness if we don't someone else will. Karen advised Ken is very excited by this paper as it will be very helpful in informing SG response to the NPS-UDC Early stage planning is under way for the mid-way summit, suitable dates, and venue. Discussion PATAG/DHB/SG involvement. Karen asked if everyone was ok with the reviewed timeline – All in agreement
	Action	Invite TCC Youth Advisor to attend
	Action	Karen will circulate forum membership



PATAG Involvement in the Eastern bay update		No action
General Business		None
		Next Meeting at The School House Wednesday 25 January 2017 - 1:00-3:00pm Tony Lawson gave apologies for Jan 25th meeting
Meeting Closed at 2.30pm		

PATAG

Outstanding Actions 26 October 2016

1.	October	Anne P to arrange meeting with Bill, Sarah and Karen to discuss how to progress into the Eastern Bay.
2.	October	Karen/Anne to let Dr Liz S know when Bev or Kaye are back in the area for the renters forum.
3.	October	Annie H to provide PATAG feedback to the Positive Ageing forum.
4.	October	Megan to send Cheryl's update paper to the forum post note: sent 9 November.
5.	October	Tony Lawson to represent PATAG on the PT Blueprint Steering group. – Post note Tony confirmed will be attending
6.	October	Late Nov workshop to assess Blueprint options against Health Impacts – Megan to liaise with Joe.
7.	October	Megan circulate Total Mobility PowerPoint to PATAG post note: actioned 9 November.
8.	October	Karen S to circulate membership confirmation form via email for completion. Post note: Forms all completed 25 Nov
9.	November	Dr Lis will work on presentation in regards to Frailty & Sarcopaenia Post note: Presentation will take place in the next meeting 29th March 2017.
10.	November	Karen will circulate items of interest -accommodating ethic interest, two presentations from Kay retirement homes release of equity and one on the NZ property owners. Membership form sent Post Note: Sent 02 Dec 16

PATAG meeting minutes and actions – 23 November 2016



NOTES FROM PATAG ON Positive Ageing Advisory Forum

26 October 2016

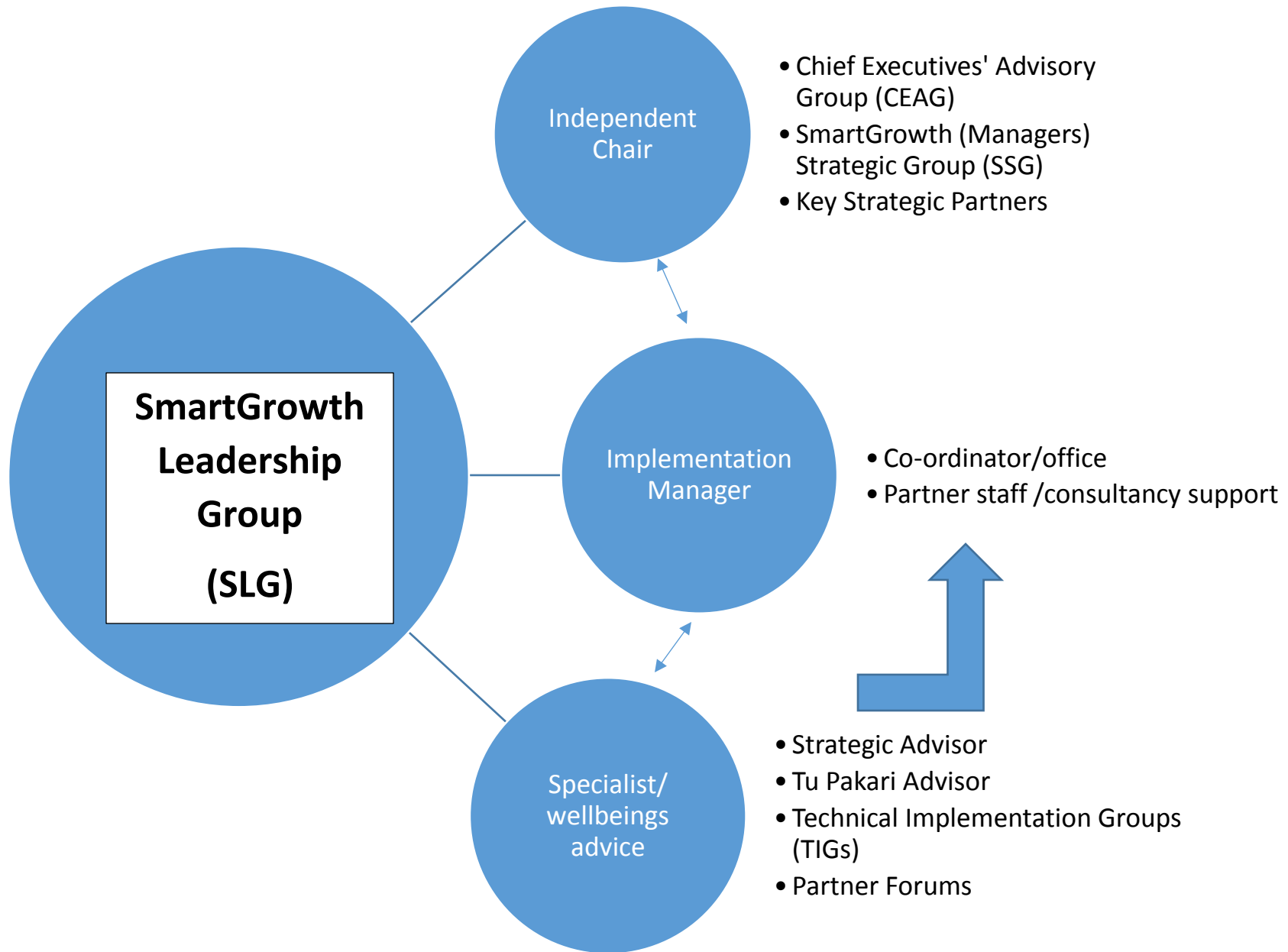
-
- Purpose of the group is to give council feedback on the content of strategies, policies and bylaws, guidance on mechanisms of engagement with older people and drive the goals of the Age Friendly City Strategy.
 - PATAG is confused about the name Positive Ageing Tauranga. It implies that the group is about the process of positive ageing, meaning it involves all people. However, from the description of those that will be involved, it appears to be a network of organisations that provide services to older people.
 - Is it about services or about population ageing? If the former, should the name be reviewed? If the latter, what is its relationship with PATAG?
 - Does the group advise on positive ageing as it relates to younger people?
 - Age Friendly City is a global strategy that is more about population ageing than about older people.
-

Meeting with Dani Jurgeleit, TCC

10 November 2016

-
- Positive Ageing Advisory Forum is a name used by other local authorities around the country, which is why it has been picked up by Tauranga.
 - Positive Ageing Advisory Forum will focus on providing input to strategies and policies from the perspective of older people.
 - It will have a specific focus on implementing the Age Friendly City Strategy, selection 4-5 actions to focus on each year. Initially these will be around mitigating social isolation.
 - It replaces the Elders' Forum, which had considerable issues.
 - The Positive Ageing Advisory Forum is an initiative driven by elected members.
 - Youth is not a part of this forum, however in TCC has just employed a youth advisor who will implement the Youth Engagement Plan.

PATAG meeting minutes and actions – 23 November 2016



Timeframes and Process for Position Paper responses¹

Key tasks	Organisation	Key dates
Council information populated in Response Tables (first draft).	Partner Councils	End November 2016
Develop first cut of information. Further iterations as required - may require more information, resolve any conflicting information, add input from other key stakeholders.	SmartGrowth (and partner Councils)	October – December 2016.
Update on Response progress. Discuss and agree on proposed process and timeframes for reporting back.	IMG	1 November 2016
Update Forums on Position Paper Response Framework. Report on agreed process and timeframes for reporting back.	Forums	November 2016
Update on Response progress. Discuss proposed format for reporting back.	IMG	6 December 2016
Include reference to this process in general SmartGrowth overview (recognising that there are other post-election priorities for this meeting)	SGIC	14 December 2016
Include reference to this process in work programme and project planning discussion.	SGIC	15 February 2017
Present draft Response information (based on staff feedback).	SmartGrowth Strategic Group (formerly IMG)	27 February 2017
Workshop Response information with Councils.	TCC/WBOPDC	March 2017
Joint hui (format to be determined). Discuss Response information. Feedback on Response information. Identify further areas of action or interest from Forums.	Forums	March/April 2017
Workshop and discussion on Response information. Discuss Forum feedback. Identify areas of further work required.	SGIC workshop plus Forum chairs.	19 April 2017

¹ Agreed to at the 1 November 2016 IMG meeting and updated 14/12/2016 with confirmed meeting dates