

He Rangatahi, He Anamata

Our youth, our future

Our aspiration is to empower Māori youth for successful futures.

Dr Riri Ellis and Sir Michael Cullen



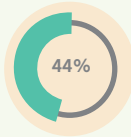
CREATING KIWI LEADERS

An integrated people development strategy is needed to grow our people and our region. Lets connect to what works and fill the gaps.



WE'RE HERE:

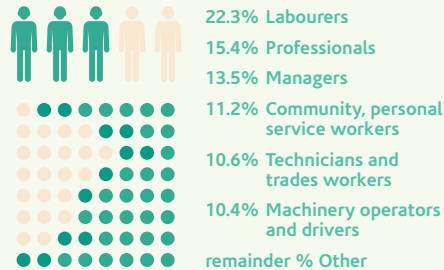
44% Māori population under 15 years of age



20% 20% of Māori youth unemployed

25% Increase in number of Māori in skilled work since 2012

MĀORI IN WORK - SECTORS WHERE MĀORI ARE EMPLOYED IN BOP



\$22,500 Median income for Māori aged 15 years and over in 2013; this compares to \$37,100 for other ethnicity and \$30,900 for European.



Māori earn \$116 per week less than non-Māori

27,316 of the 77,880 Māori who live in the BOP are employed

OPPORTUNITY:



Jobs in a range of sectors are expected to grow across the BOP, especially in skilled areas.

MĀORI ASSET BASE

He Mauri Ōhoho Strategy – Maori Asset Base

\$8.6 Billion total Māori asset base in the Bay of Connections (BOC) region

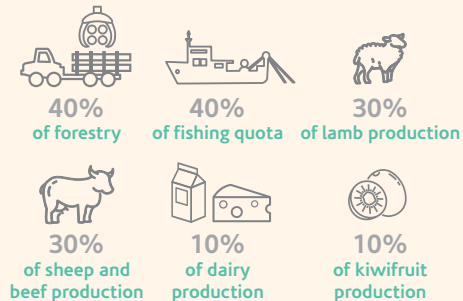
11% Māori contribute to the GDP in the BOC



29% 29% of the Māori collective asset base in NZ is in the BOC

685,000 (approx) hectares of Māori land (31% of the region) in the BOC.

PROPORTION OF NZ ASSET CLASSES OWNED BY MĀORI



WHERE WE NEED TO BE:



Māori youth engaged in training - leading to higher skilled and better paying jobs or self-employment.



Māori youth have the skills needed by local employers.



Māori youth income and disposable income levels increased and on par with NZ average for non Māori.

Let's do this together

Start by contacting our Kaihautu Ōhanga Māori:

rangatahi@priorityone.co.nz