



HE MAURI OHOOHO

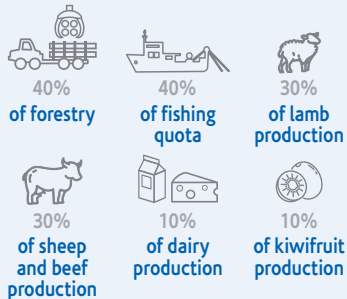
### Strategy Refresh 2018-2020

Connecting and navigating regional development to build stronger communities and whānau in the wider Bay of Plenty

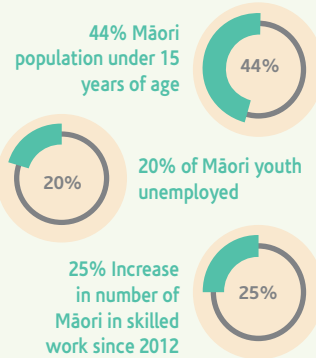
He Mauri Ohooho is New Zealand's first regionally coordinated Māori Economic Development Strategy.

He Mauri Ohooho was developed under the Bay of Connections framework in partnership with the Ministry for Māori Development's Te Puni Kōkiri - established to harness the collective talents of Māori to produce a stronger New Zealand.

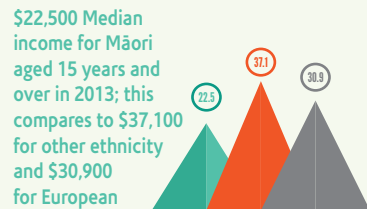
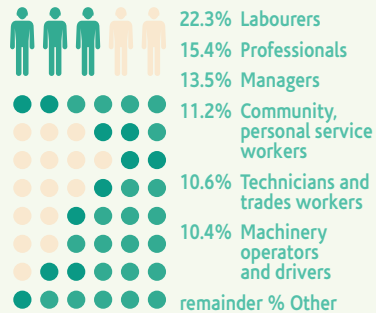
### PROPORTION OF NZ ASSET CLASSES OWNED BY MĀORI



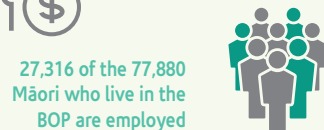
### WE'RE HERE:



### MĀORI IN WORK - SECTORS WHERE MĀORI ARE EMPLOYED IN BOP



Māori earn \$116 per week less than non-Māori



### OPPORTUNITY:

Māori Economic Development is dynamic

#### MĀORI ASSET BASE



11% Māori contribute to the GDP in the BOC



685,000 (approx) hectares of Māori land (31% of the region) in the BOC



Over 35 Iwi, over 230 Hapū, approx. 163 Marae in the wider region

1800 Māori Land Trusts

#### MĀORI BUSINESS NETWORK



Jobs in a range of sectors are expected to grow across the BOP, especially in skilled areas



### OUR APPROACH

#### NAVIGATING AND CONNECTING



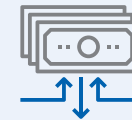
Iwi, Industry and Government

#### COLLABORATION



Working together to make a difference

#### CO-OPERATIVE CAPITAL



Facilitating investment to realise potential

#### INVESTING IN OUR YOUTH



#### ACTIVELY SUPPORTING BOC



Delivering on the Bay of Plenty's Regional Growth Programme



### WHERE WE NEED TO BE:

#### MĀORI LAND USE OPTIMISED



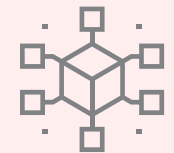
#### DEVELOP TALENT TO GOVERN, MANAGE AND THRIVE



#### MĀORI ARE INTO HIGHER SKILLED AND BETTER PAYING JOBS OR SELF-EMPLOYMENT



#### A THRIVING MĀORI BUSINESS NETWORK



#### MĀORI YOUTH EMPOWERED

